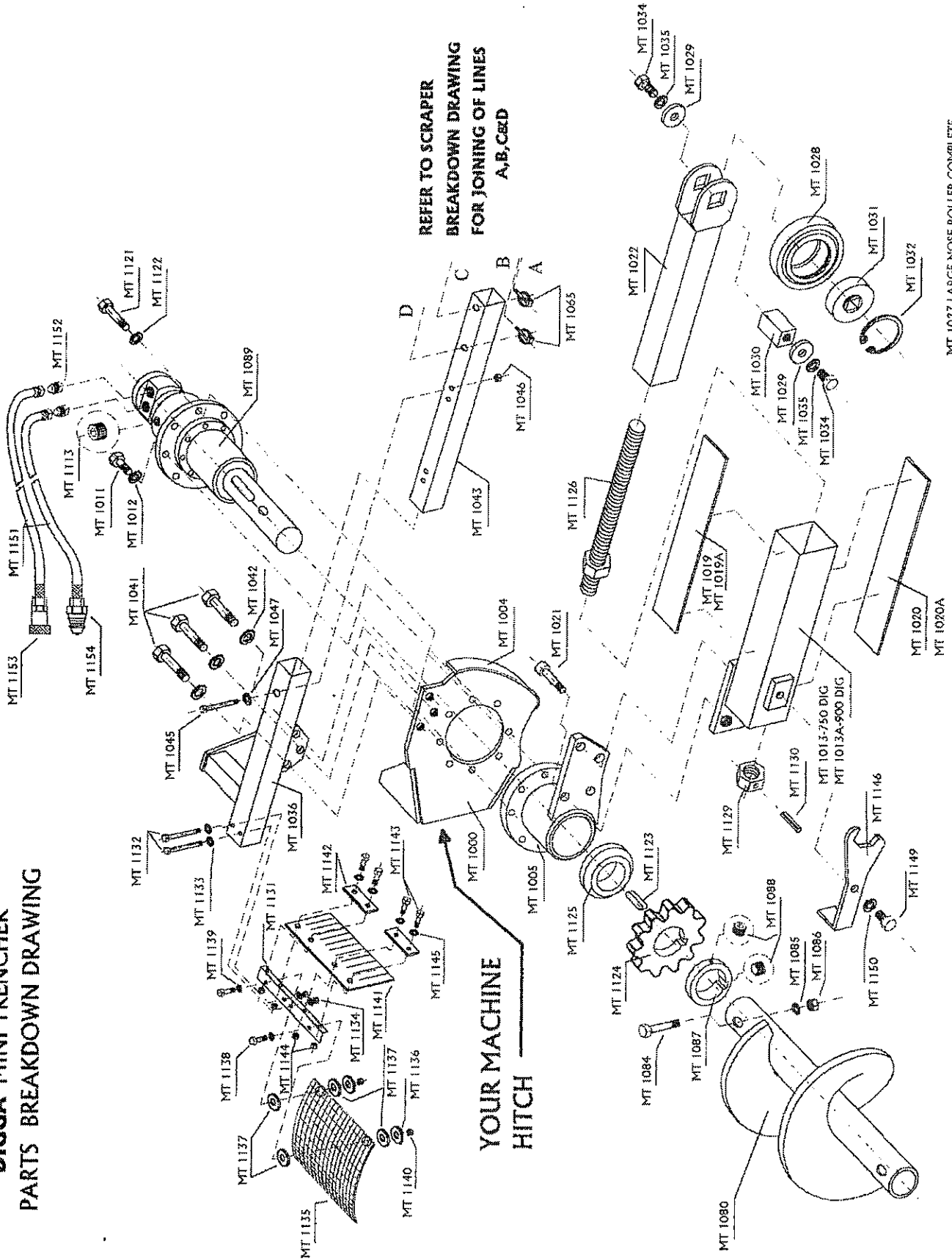


**DIGGA MINI TRENCHER
PARTS BREAKDOWN DRAWING**



TRENCHER PARTS LIST

9

DIGGA PART NO	DESCRIPTION OF PARTS	DESCRIPTION BOLTS, NUTS & WASHERS	NO. PER UNIT
MT 1000	BACKING PLATE / SIDE PLATE COMPLETE		1
MT 1004	SKID PLATE		1
MT 1005*	PIVOT HOUSING COMPLETE		1
MT 1011*	PIVOT HOUSING TO SIDE PLATE	½" x 2 ¾" UNC Bolt ZC	6
MT 1012*	PIVOT HOUSING TO SIDE PLATE	½" Spring Washer	6
MT 1013	OUTER BOOM COMPLETE 750 DIG		1
MT 1013A	OUTER BOOM COMPLETE 900 DIG		1
MT 1019	WEAR STRIP (TOP & BOT) WELDED 750 DIG		1
MT 1019A	WEAR STRIP (TOP & BOT) BONDED 750 DIG		1
MT 1020	WEAR STRIP (TOP & BOT) WELDED 900 DIG		1
MT 1020A	WEAR STRIP (TOP & BOT) BONDED 900 DIG		1
MT 1021	OUTER BOOM TO PIVOT HOUSING	M16 x 35 SHCS (ZC)	4
MT 1022	INNER BOOM COMPLETE		1
MT 1027*	LARGE NOSE ROLLER COMPLETE		1
MT 1028*	LARGE NOSE ROLLER		1
MT 1029*	NOSE ROLLER PIN WASHERS		2
MT 1030*	NOSE ROLLER SQ PIN		1
MT 1031*	NOSE ROLLER BEARING		1
MT 1032*	NOSE ROLLER CIRCLIP		1
MT 1034*	NOSE ROLLER WASHER TO SQ PIN	½" x 1" UNC Bolt ZC	2
MT 1035*	NOSE ROLLER WASHER TO SQ PIN	½" Spring Washer ZC	2
MT 1036	OUTER DANGER BAR COMPLETE		1
MT 1041	DANGER BAR TO SIDE PLATE	½" x 1 ½" UNC Bolt ZC	3
MT 1042	DANGER BAR TO SIDE PLATE	½" Spring Washer ZC	3
MT 1043	INNER DANGER BAR COMPLETE		1
MT 1045*	INNER DANGER BAR TO OUTER D/BAR	½" x 3 ½" UNC Bolt ZC	1
MT 1046*	INNER DANGER BAR TO OUTER D/BAR	½" Nyloc	1
MT 1047*	INNER DANGER BAR TO OUTER D/BAR	½" Flat Washer ZC	1
MT 1080	RH AUGER COMPLETE		1
MT 1084	AUGER COMPLETE TO SPROCKET SHAFT	½" x 3 ½" UNC Bolt ZC	1
MT 1085	AUGER COMPLETE TO SPROCKET SHAFT	½" Spring Washer ZC	1
MT 1086	AUGER COMPLETE TO SPROCKET SHAFT	½" Nyloc	1
MT 1087	SPROCKET RETAINING COLLAR		1
MT 1088	RETAINING COLLAR GRUB SCREW		2
MT 1089*	PLANETARY GEARBOX COMPLETE		1
MT 1113*	3/8" BSPT OIL PLUG	3/8" x 3/8" Taper Plug	1

* FOR OFFICE USE ONLY

DIGGA

Mini Trencher Operators Manual

DIGGA

03/03/03 Copyright Digga Australia Pty Ltd A.C.N. 010 443 875
E:\Europe Mini Trencher Operators Manualv2.doc

TRENCHER PARTS LIST CONT.

10

DIGGA PART NO	DESCRIPTION OF PARTS	DESCRIPTION BOLTS, NUTS & WASHERS	NO. PER UNIT
MT 1120*	PLANETARY TO SIDE PLATE	½" x 1 ½" UNC Bolt ZC	2
MT 1121*	PLANETARY TO SIDE PLATE	½" Spring Washer ZC	2
MT 1123	DRIVE SPROCKET KEY		1
MT 1124*	DRIVE SPROCKET 2" BORE		1
MT 1125*	SEAL PROTECTOR		1
MT 1126*	ADJUSTING SCREW COMPLETE (BOOM)		1
MT 1129*	NUT TO ADJUSTING SCREW	1" UNC H/T (Pinned)	1
MT 1130*	NUT TO ADJUSTING SCREW	¼" x 1 ½" Roll Pin	1
MT 1131	ANGLE BRACKET		1
MT 1132	ANGLE BRACKET TO DANGER BAR	5/16" UNC x 3 ½" Bolt ZC	2
MT 1133	ANGLE BRACKET TO DANGER BAR	5/16" Flat Washer ZC	2
MT 1134	ANGLE BRACKET TO DANGER BAR	5/16" UNC Nyloc	2
MT 1135	GUARD		1
MT 1136	GUARD TO ANGLE BRACKET	3/8" x 1 ½" x 16G F/Washer	2
MT 1137	GUARD TO ANGLE BRACKET	3/8" x 1 ½" Rubber Washer	4
MT 1138	GUARD TO ANGLE BRACKET	5/16" UNC x 1" bolt ZC	2
MT 1139	GUARD TO ANGLE BRACKET	5/16" Flat Washer ZC	2
MT 1140	GUARD TO ANGLE BRACKET	5/16" UNC Nyloc	2
MT 1141	RUBBER FLAP		1
MT 1142	RUBBER FLAP RETAINING PLATES	25 x 6 FMS	2
MT 1143	RUBBER FLAP TO ANGLE BRACKET	5/16" UNC x 1" Bolt ZC	4
MT 1144	RUBBER FLAP TO ANGLE BRACKET	5/16" UNC Nyloc	4
MT 1145	RUBBER FLAP TO ANGLE BRACKET	5/16" Flat Washer ZC	4
MT 1146*	SPANNER COMPLETE		1
MT 1149*	SPANNER TO OUTER BOOM	½" x 1" UNC Bolt ZC	1
MT 1150*	SPANNER TO OUTER BOOM	½" Spring Washer ZC	1

*** FOR OFFICE USE ONLY**

DIGGA

Mini Trencher Operators Manual

DIGGA

03/03/03 Copyright Digga Australia Pty Ltd A.C.N. 010 443 875
E:\Europe Mini Trencher Operators Manual\2.doc

SCRAPER PARTS LIST

12

DIGGA PART NO		DESCRIPTION OF PARTS	DESCRIPTION BOLTS, NUTS & WASHERS	No. PER UNIT
MT	1048*	FOLDBACK SCRAPER COMPLETE		1
MT	1049*	PIVOT HEAD COMPLETE		1
MT	1050*	MOUNTING BLOCK COMPLETE		1
MT	1051*	SCRAPER SIDE PLATE ASSEM. COMPLETE		1
MT	1058*	FB SCRAPER PIN		4
MT	1059*	FB SCRAPER PIVOT ARMS (FRONT LONG)		2
MT	1060*	FB SCRAPER PIVOT ARMS (REAR SHORT)		2
MT	1061*	FB SCRAPER SKELETON PLATE		1
MT	1062*	FB SCRAPER P/HEAD BUSHES (LOOSE)		2
MT	1064*	FB SCRAPER REAR PIVOT PIN		1
MT	1065*	FB SCRAPER RETAINING PIN CLIP	6mm Lynch Pin (CAD)	2
MT	1066*	FB SCRAPER RETAINING PIN		2
MT	1067*	FB SCRAPER SPRING		1
MT	1068*	FB SCRAPER SHOE 140mm	To suit 150mm (6") Cut Chain	1
MT	1069*	FB SCRAPER SHOE 190mm	To suit 200mm (8") Cut Chain	1
MT	1070*	FB SCRAPER SHOE 240mm	To suit 250 mm (10") Cut Chain	1
MT	1071*	FB SCRAPER SHOE 290mm	To suit 300mm (12") Cut Chain	1
MT	1072*	FB SCRAPER SHOE 340mm	To suit 350mm(14") Cut Chain	1
MT	1073*	FB SCRAPER PIN SPACER WASHER	9/16" x 1 1/8" x 16G F/W	8
MT	1074*	FB SCRAPER PIVOT ARM TO SCRAPER PIN	M10 x 16 Button Screw	8
MT	1075*	SPRING TO SCRAPER PIVOT HEAD	5/16" x 3 1/2" UNC Bolt ZC	1
MT	1076*	SPRING TO SCRAPER PIVOT HEAD	5/16" Nyloc	1
MT	1077*	SCRAPER SHOE TO SCRAPER SKELETON PL	5/16" x 1" UNC Bolt ZC	3
MT	1078*	SCRAPER SHOE TO SCRAPER SKELETON PL	5/16" Nyloc	3
MT	1079*	SCRAPER SHOE TO SCRAPER SKELETON PL	5/16" Flat Washer ZC	6

*** FOR OFFICE USE ONLY**

DIGGA

Mini Trencher Operators Manual

DIGGA

03/03/03 Copyright Digga Australia Pty Ltd A.C.N. 010 443 875
E:\Europe Mini Trencher Operators Manualv2.doc