

## A47773 Boom floating, Avant 500 srj

- With this instruction boom floating kit can be assembled on a Avant 500 series loader
- This is a retrofit instruction

## A47773 Boom floating, Avant 500 srj

- your retrofit kit Before assembling make sure that you find all of the components listed below in your retrofit kit
  - 64676 Solenoidvalve
  - 64044 Elbowfitting 90°
  - 64078 L-fitting body
  - A410017 Hydraulic hose
  - 64693 Elbow fitting 90°
  - 64303 L-fitting body
  - A47682 Hydraulic hose
  - 64909 Reducer fitting
  - 64082 Fitting
  - A47841 Wire harness, boom floating

## A47773 Boom floating, Avant 500 srj

- Lift the boom up and support it by service support
- Remove the right side cover and the front covers



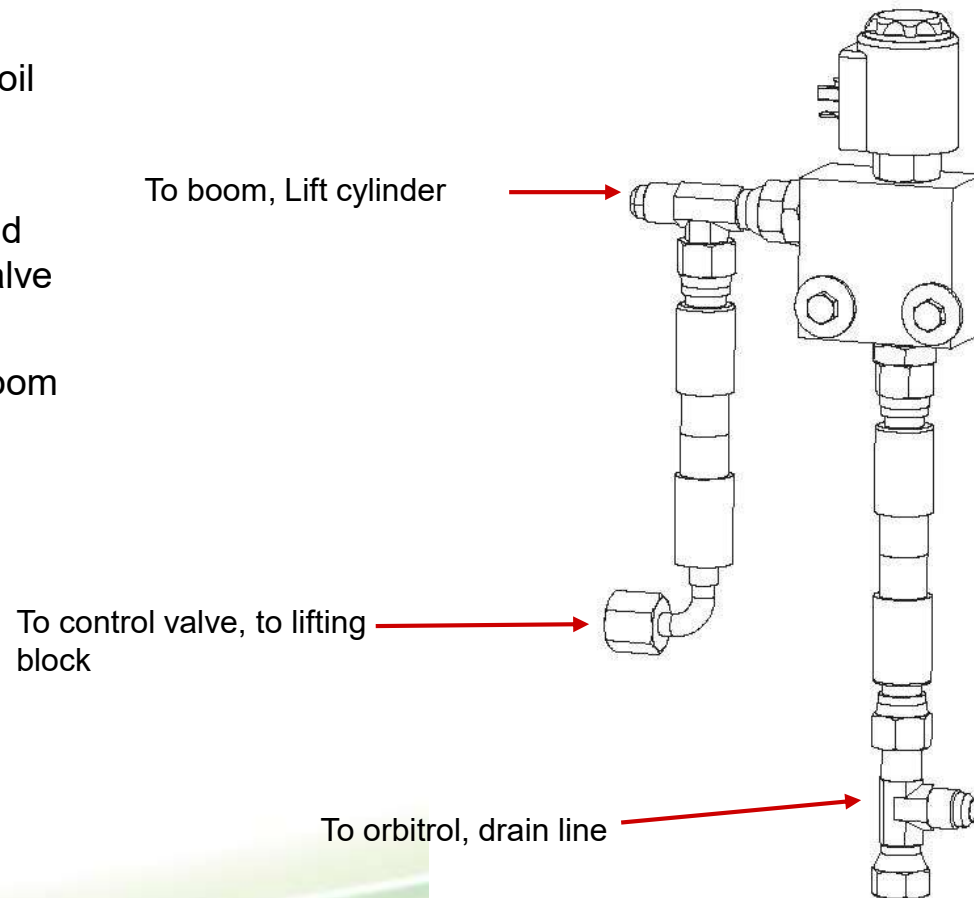
## A47773 Boom floating, Avant 500 srj

- When covers are removed wash the control valve to avoid contaminating the hydraulic system
- Remove this hose from control valve
- It's the one wich controls the lifting cylinder



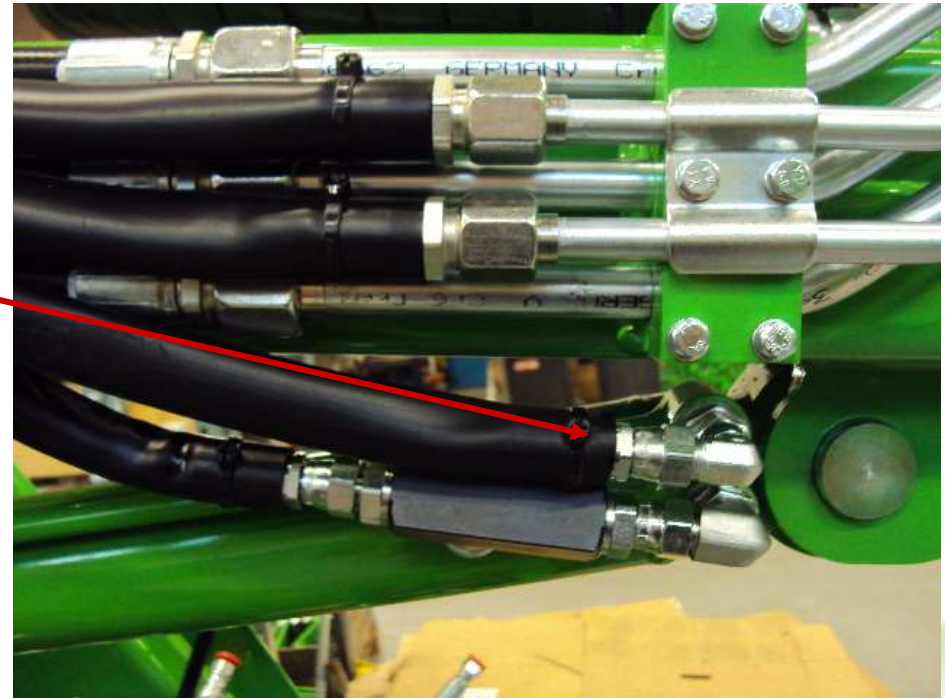
## A47773 Boom floating, Avant 500 srj

- Boom floating valve will be attached under the hydraulic oil cooler
- Loaders front frame has drilled holes for the boom floating valve
- The picture is 3D-model of boom floating valve and the hoses



## A47773 Boom floating, Avant 500 srj

- To help the assembly remove the spiral from hoses and loosen up the upper lift cylinder hose



## A47773 Boom floating, Avant 500 srj

- Boom floating valve is prepared for assembly
- Drain line, wire harness and the hose for control valve has been attached to it



## A47773 Boom floating, Avant 500 srj

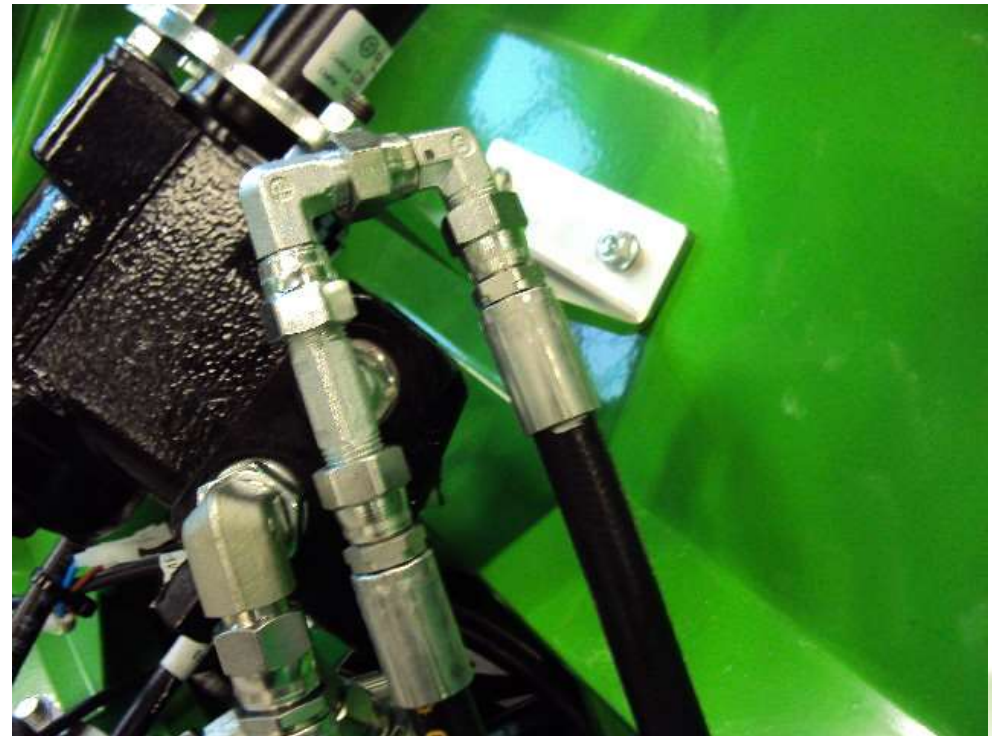
- Floating valve is attached to loaders front frame under the hydraulic oil cooler
- Frame has holes for this valve
- When the valve is on it's place you can attach the hose wich comes from the boom





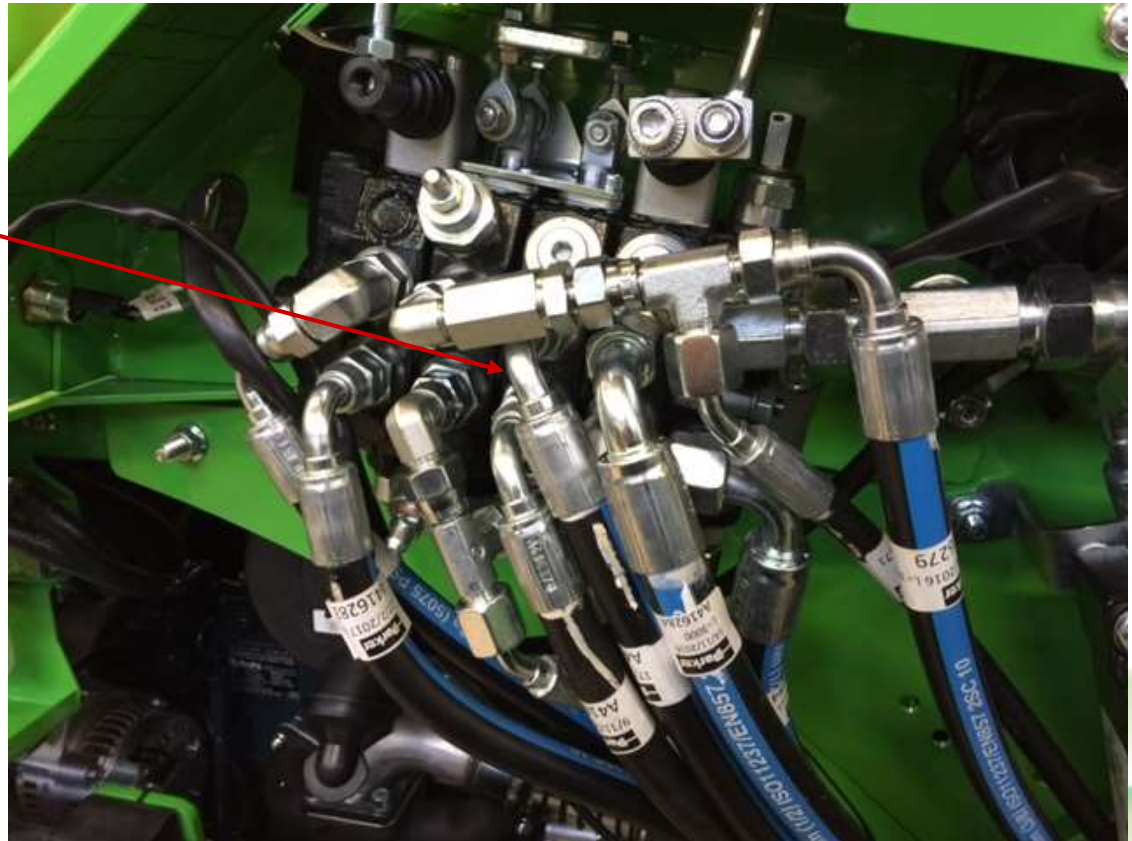
## A47773 Boom floating, Avant 500 srj

- Drain line is attached to orbitrol into a fittings for it
- Retrofit kit has fittings for this



## A47773 Boom floating, Avant 500 srj

- The hose from boom floating valve is brought to control valve
- Tighten the hose to it's place
- Make sure that auxiliary hydraulic lever has enough room

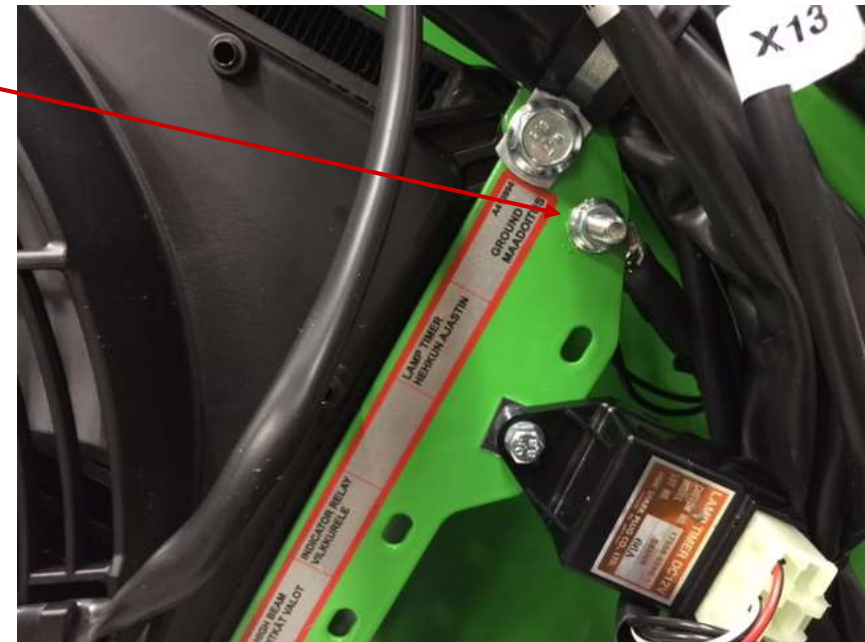


## A47773 Boom floating, Avant 500 srj

- When the valve is on it's place and hoses are on their places tighten them up
- The wire harness wich was attached to floating valve will be routed to fuse box, grounding point and to dashboard

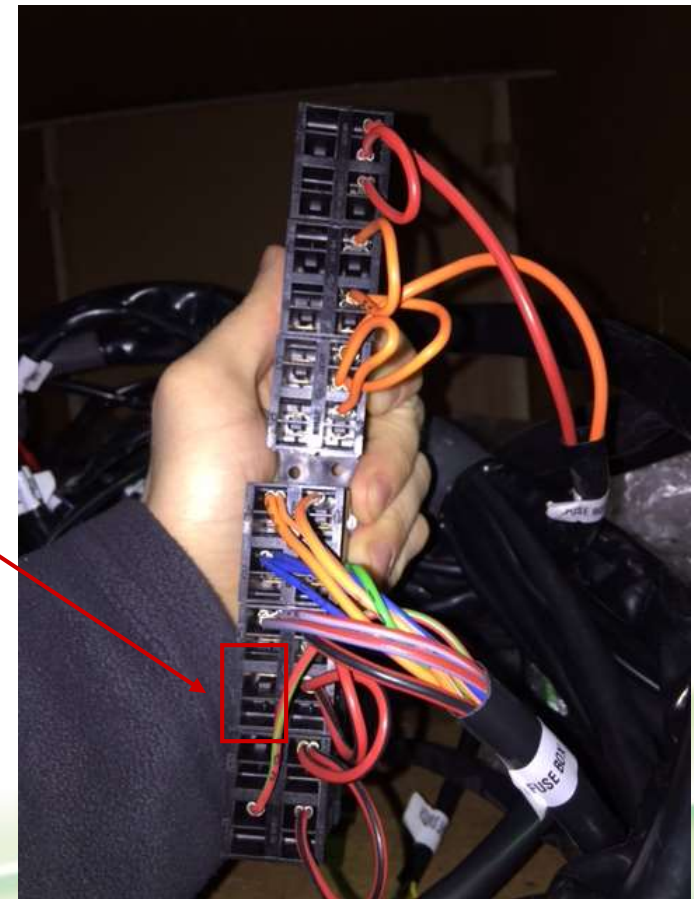
## A47773 Boom floating, Avant 500 srj

- Here is loaders grounding point in front frame
- Boom floating wire harness grounding wire needs to be attached here



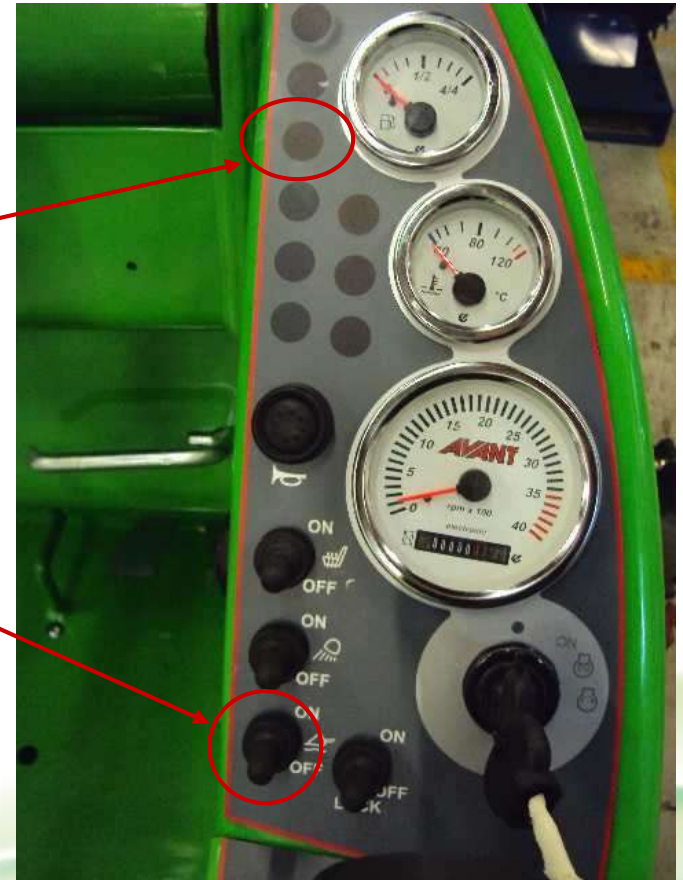
## A47773 Boom floating, Avant 500 srj

- Fuse wire needs to be attached to fusebox to fuse Boom floating 20A
- Fusewire is attached here inside the red box
- Make sure to connect to the fused side of the connection bar



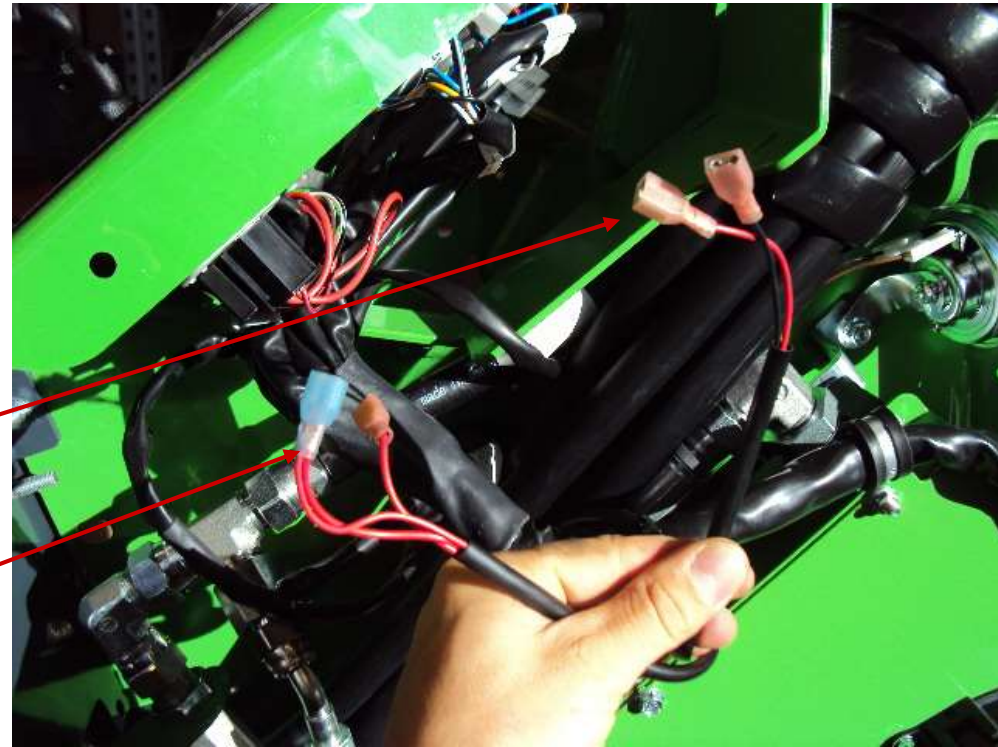
## A47773 Boom floating, Avant 500 srj

- Signal light and switch for boom floating
- Signal light is here next to fuel gauge
- Use switch is here the lowest one



## A47773 Boom floating, Avant 500 srj

- Remove the dashboard from the loader so you have room to attach these wires to dashboard
- The couplings for light and use switch
- Black and red wire will be attached to signal light
- And the only red wires are attached to use switch



## A47773 Boom floating, Avant 500 srj

- When the couplings are attached and the hoses are tightened test the boom floating
- Test the floating by lifting loaders front tyres in the air with boom when the floating is off
- When turning the floating on tyres should go down and the boom can not lift the front tyres in the air
- When everything works and there aren't any oil leaks attach the covers back